

Year 2 Spring 2 Maths Activity Mat 1

Section 1

Circle true or false

$$12 + 13 = 26 \quad \text{True / False}$$

$$15 - 6 = 9 \quad \text{True / False}$$

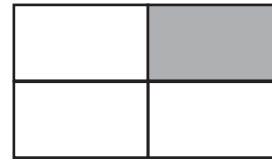
$$4 \times 10 = 40 \quad \text{True / False}$$

Section 2

What is a five-sided shape called?

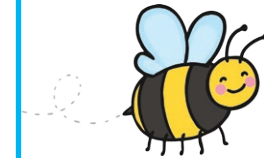
Section 3

What fraction is shaded?



Section 4

There are 12 bees and beetles. Seven of the insects are beetles. How many are bees?



Section 5

What is the total of the coins?



Section 6

Which rope is the shortest?

A



B



C



Section 7

Put these numbers in order, largest to smallest.

34, 61, 14, 86, 55

Section 8



=2



=5



=10



x



=

Year 2 Spring 2 Maths Activity Mat 1 Answers

Section 1

Circle true or false

$$12 + 13 = 26 \quad \text{True / } \text{False}$$

$$15 - 6 = 9 \quad \text{True / False}$$

$$4 \times 10 = 40 \quad \text{True / False}$$

Section 2

What is a five-sided shape called?

pentagon

Section 3

What fraction is shaded?

$\frac{1}{4}$

Section 4

There are 12 bees and beetles. Seven of the insects are beetles. How many are bees?

5

Section 5

What is the total of the coins?

19p

Section 6

Which rope is the shortest?

A

Section 7

Put these numbers in order, largest to smallest.

34, 61, 14, 86, 55

86, 61, 55, 34, 14

Section 8

20

Year 2 Spring 2 Maths Activity Mat 1

Section 1

Circle true or false

$$34 + 25 = 59 \quad \text{True / False}$$

$$33 - 17 = 16 \quad \text{True / False}$$

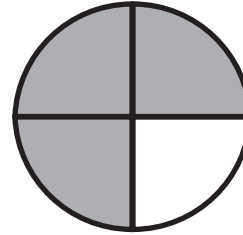
$$7 \times 5 = 30 \quad \text{True / False}$$

Section 2

What shape has 4 sides?

Section 3

What fraction is shaded?



Section 4

There are 31 butterflies and caterpillars. 19 of the insects are caterpillars. How many are butterflies?



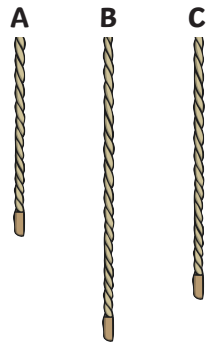
Section 5

What is the total of the coins?



Section 6

Which rope is the longest?



Section 7

Put these numbers in order, largest to smallest.

78, 123, 19, 56, 157

Section 8

$$\text{Yellow square} = 4 \quad \text{Pink triangle} = 6 \quad \text{Blue circle} = 5$$

$$\text{Yellow square} \times \text{Blue circle} = \text{Box}$$

Year 2 Spring 2 Maths Activity Mat 1 Answers

Section 1

Circle true or false

$34 + 25 = 59$ ☒ True / False

$33 - 17 = 16$ ☒ True / False

$7 \times 5 = 30$ True / ☒ False

Section 2

What shape has 4 sides?

**rectangle,
square**

Section 3

What fraction is shaded?

$\frac{3}{4}$

Section 4

There are 31 butterflies and caterpillars. 19 of the insects are caterpillars. How many are butterflies?

12

Section 5

What is the total of the coins?

76p

Section 6

Which rope is the longest?

B

Section 7

Put these numbers in order, largest to smallest.

78, 123, 19, 56, 157

157, 123, 78, 56, 19

Section 8

20

Year 2 Spring 2 Maths Activity Mat 1

Section 1

Circle true or false

$$48 + 43 = 92 \quad \text{True / False}$$

$$45 \div 5 = 9 \quad \text{True / False}$$

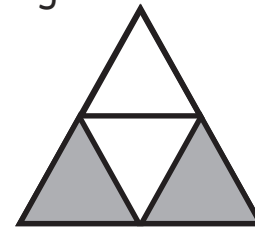
$$11 \times 10 = 110 \quad \text{True / False}$$

Section 2

What shape has 4 equal sides?

Section 3

What fraction is shaded?
Can you write your answer in two different ways?



Section 4

There are 67 spiders and worms. 39 of the bugs are worms. How many are spiders?



Section 5

What is the total of the coins?



Section 6

Which rope is the longest?

Which rope is in between?

Which rope is the shortest?

A



B



C



Section 7

Put these numbers in order, largest to smallest.

98, 101, 87, 229, 173

Section 8

 = 5  = 9  = 8

 \times  =

Year 2 Spring 2 Maths Activity Mat 1 Answers

Section 1

Circle true or false

$$48 + 43 = 92 \quad \text{True / } \text{False}$$

$$45 \div 5 = 9 \quad \text{True / False}$$

$$11 \times 10 = 110 \quad \text{True / False}$$

Section 2

What shape has 4 equal sides?

**square,
parallelogram**

Section 3

What fraction is shaded?
Can you write your answer in two different ways?

$\frac{1}{2}$ or $\frac{2}{4}$

Section 4

There are 67 spiders and worms. 39 of the bugs are worms. How many are spiders?

28

Section 5

What is the total of the coins?

£1.55

Section 6

Which rope is the longest?

B

Which rope is in between?

C

Which rope is the shortest?

A

Section 7

Put these numbers in order, largest to smallest.

98, 101, 87, 229, 173

229, 173, 101, 98, 87

Section 8

40